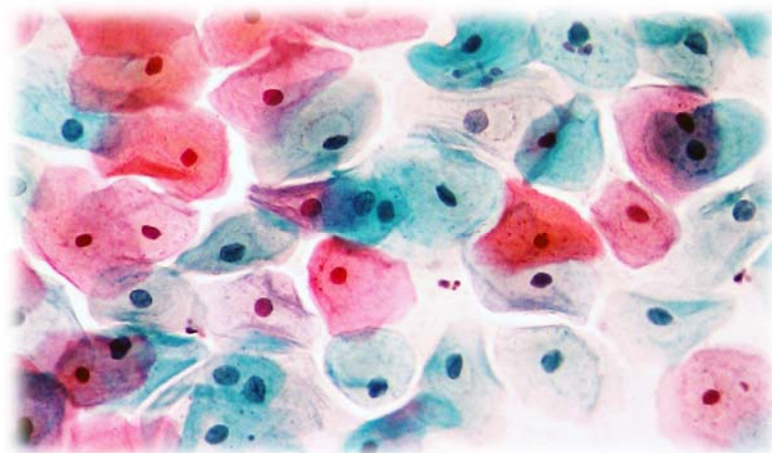


## Papanicolaou staining solutions

A highly selective blue nuclear stain, Harris' hematoxylin, is combined with EA50 polychromic mixture, a subtle cytoplasmic stain which differentiates cyanophil cells from eosinophil ones. The last ingredient is OG6 solution, which stains keratinized elements.

**Bio-Optica solutions are formulated without methanol**



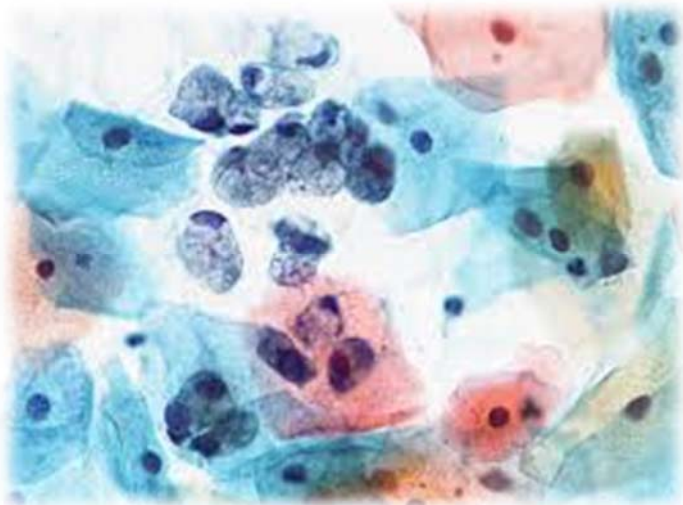
PRODUCT	PACKAGING	CODE
Papanicolaou Harris Haematoxylin	1x500 ml	05-12011
	1x1 l	05-12011/L
	1x2,5 l	05-12011E
	4x2,5 l	05-12011Q
Papanicolaou OG6	1x500 ml	05-12013
	1x1 l	05-12013/L
	1x2,5 l	05-12013E
	4x2,5 l	05-12013Q
Papanicolaou EA50	1x500 ml	05-12019
	1x1 l	05-12019/L
	1x2,5 l	05-12019E
	4x2,5 l	05-12019Q

## Fast Pap

A fast staining kit with the same results of standard Papanicolaou method in less than three minutes.

A highly selective blue nuclear stain, Harris' hematoxylin, is combined with IW3 polychromic mixture, a subtle cytoplasmic stain which differentiates cyanophil cells from eosinophil ones.

**Bio-Optica Fast Pap kit is formulated without methanol**



PACKAGING

CODE

For 500 slides

05-12055

